

## E. Effects On Time and Quality of Learning with Increasing the Number of Variables

### E.1. EFFECT ON GREEDY SEARCH OF INCREASING THE NUMBER OF VARIABLES

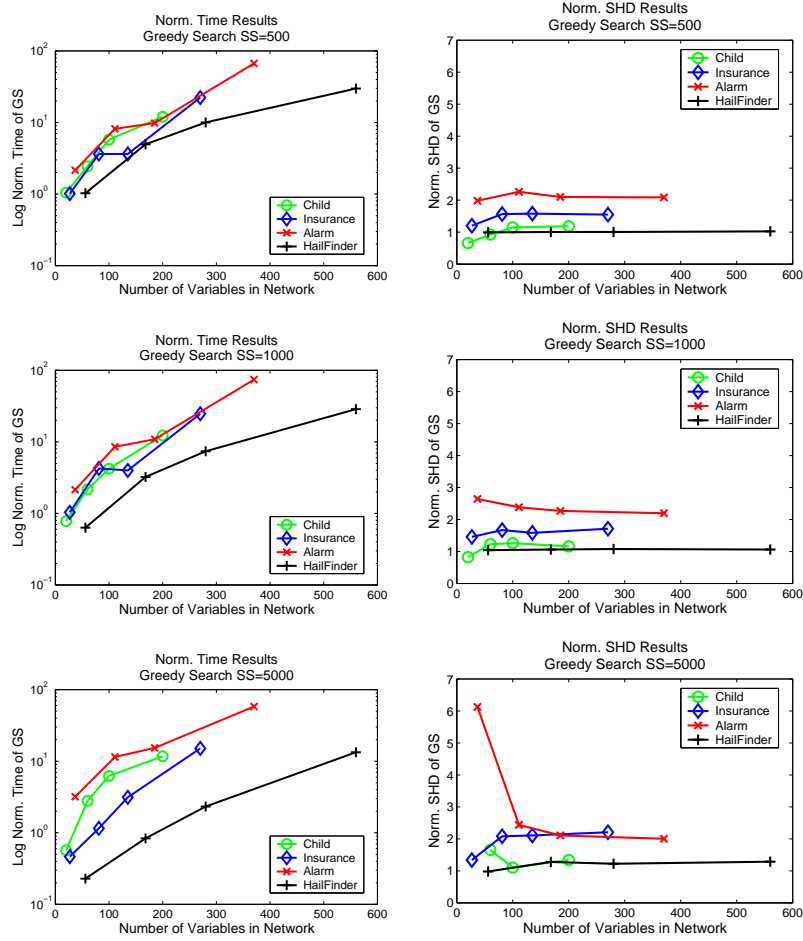


Figure 28. Normalized Time and Normalized *SHD* vs. number of variables in the network for the Greedy Search algorithm on the CHILD, INSURANCE, ALARM, HAILFINDER tiled networks.

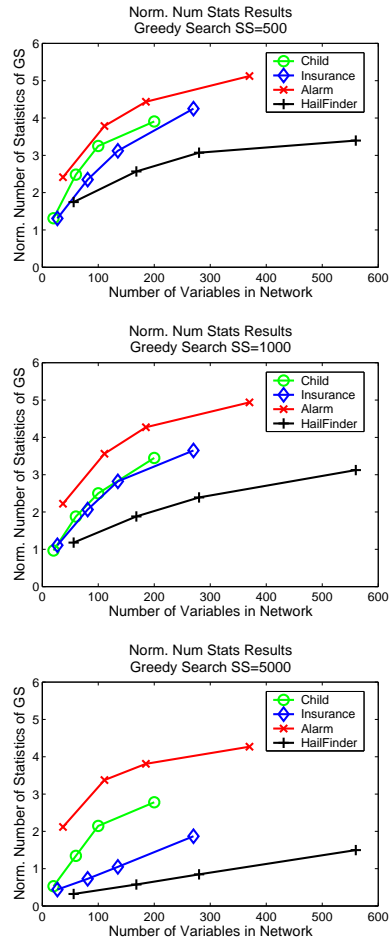


Figure 29. Normalized Number of Statistics vs. number of variables in the network for the Greedy Search algorithm on the CHILD, INSURANCE, ALARM, HAILFINDER tiled networks.