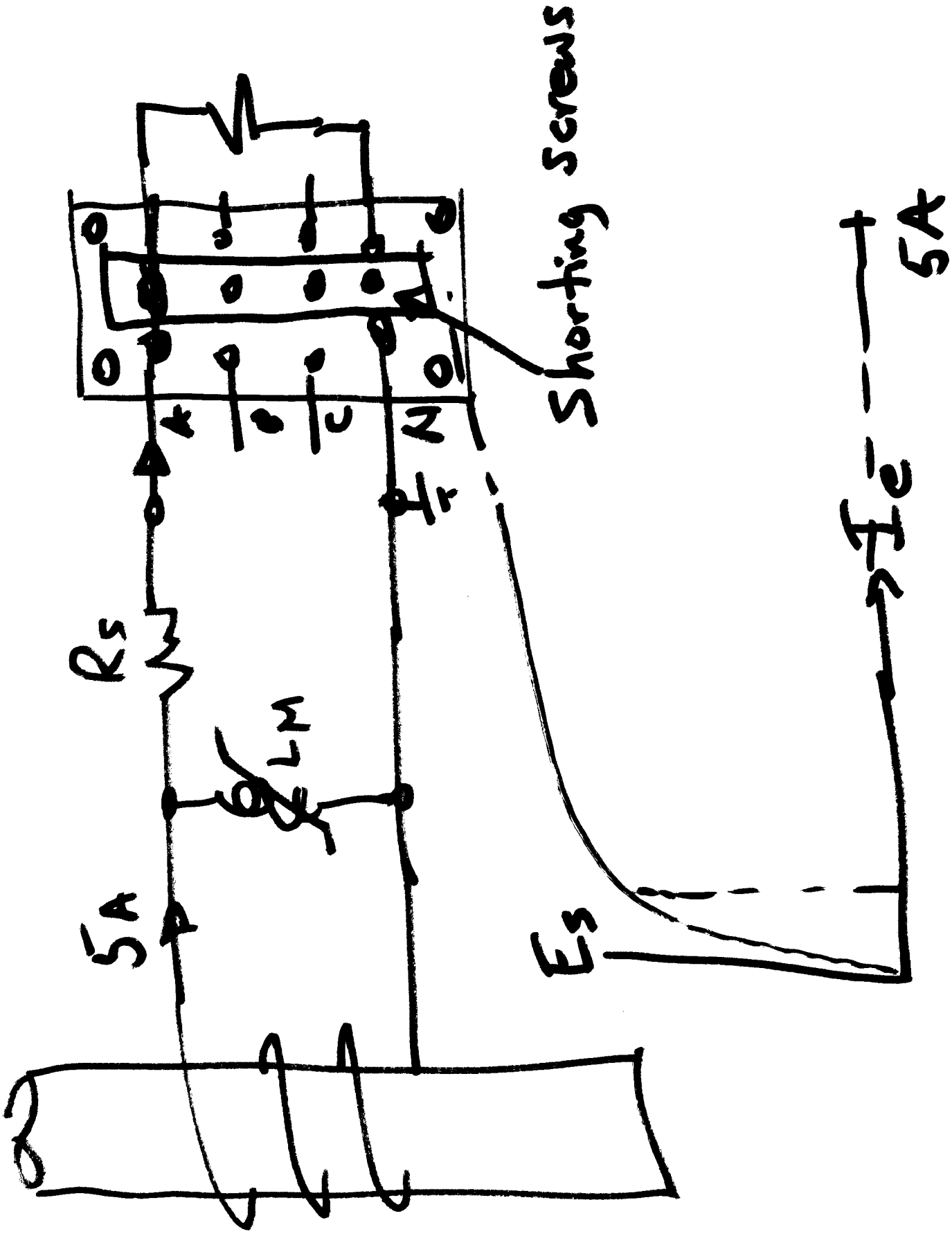
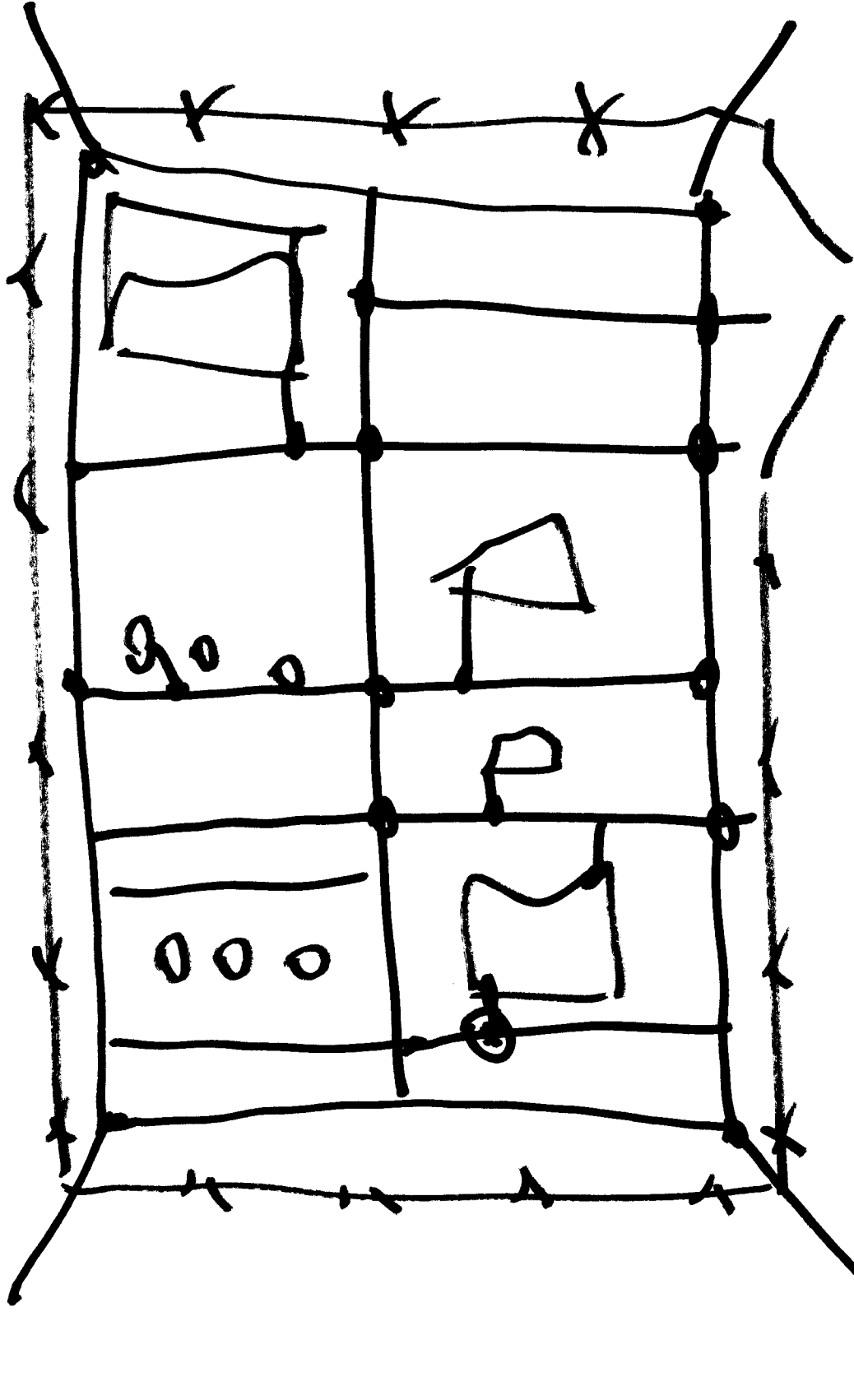


# SAFETY -

- Grounding
- Procedures
- CT secondaries
- Stray Voltage
- Downed Lines (High-Imp Faults)
- Step and ~~Imp~~ Touch Potential



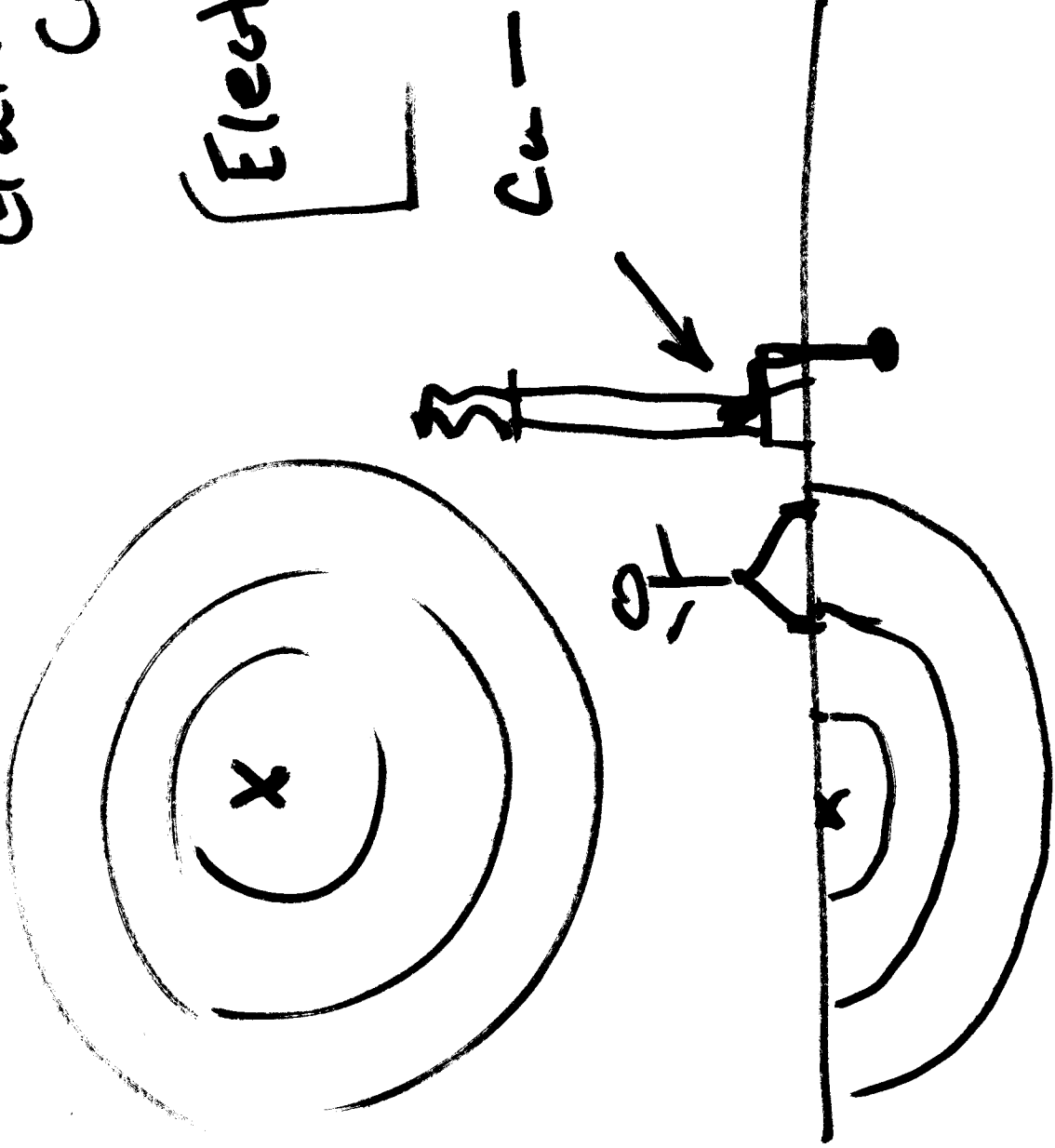


Reduce Step Pot  
 & touch pot.  
 1  $\Omega$ -m  
 ( $\geq 100 \Omega$ -m)

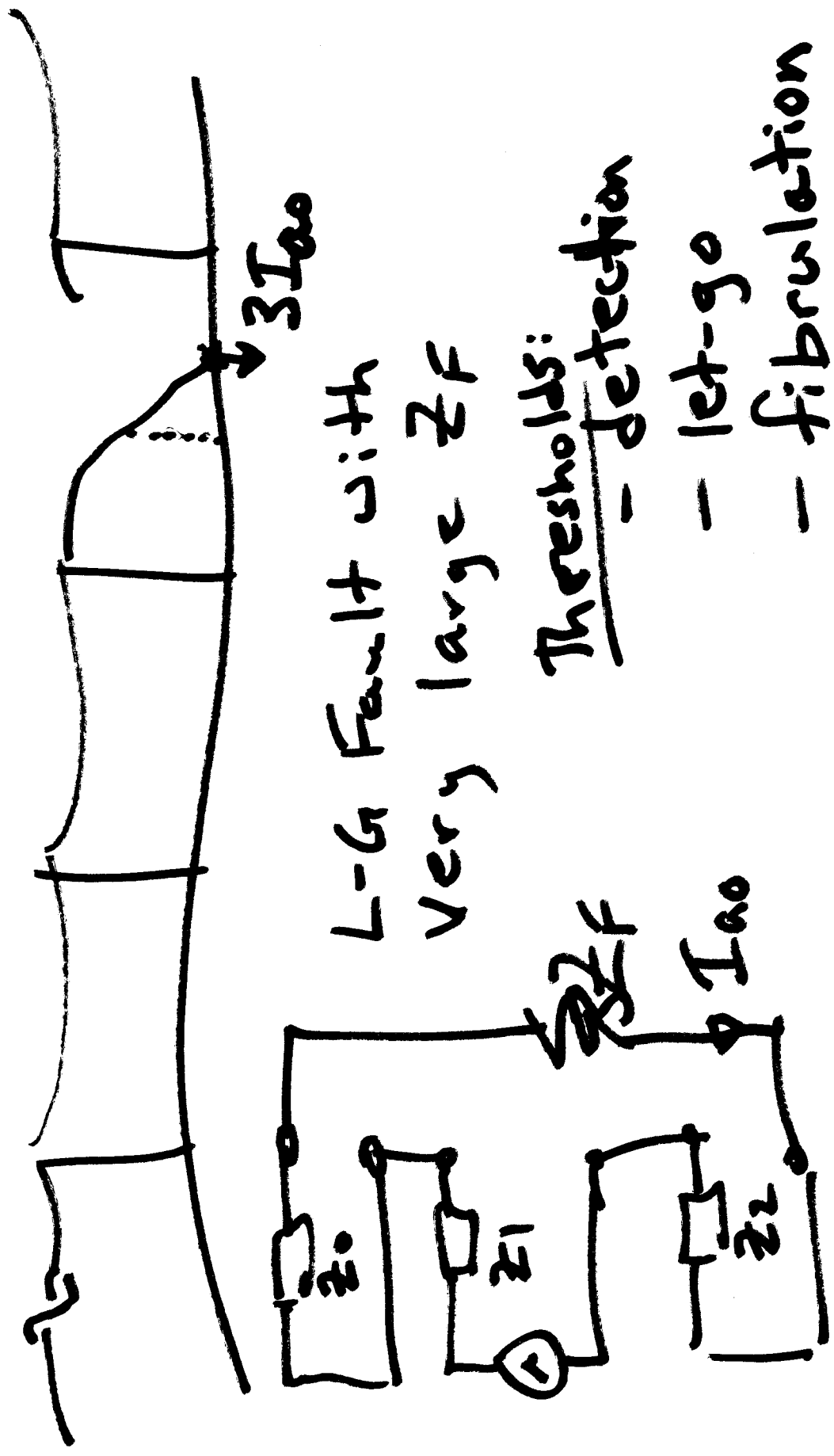
# Galvanic Corrosion

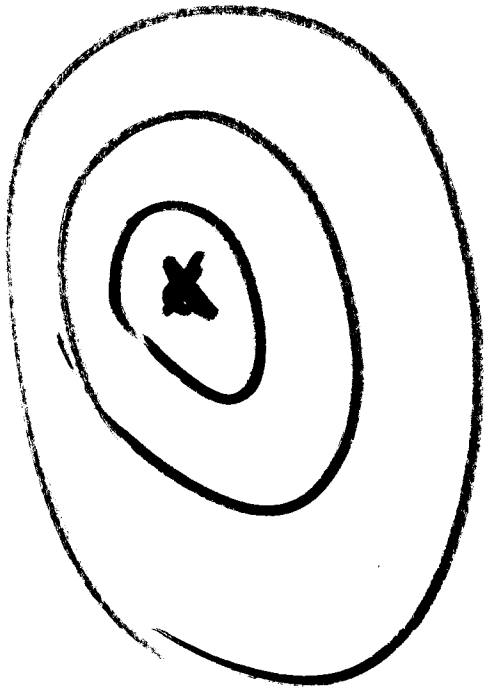
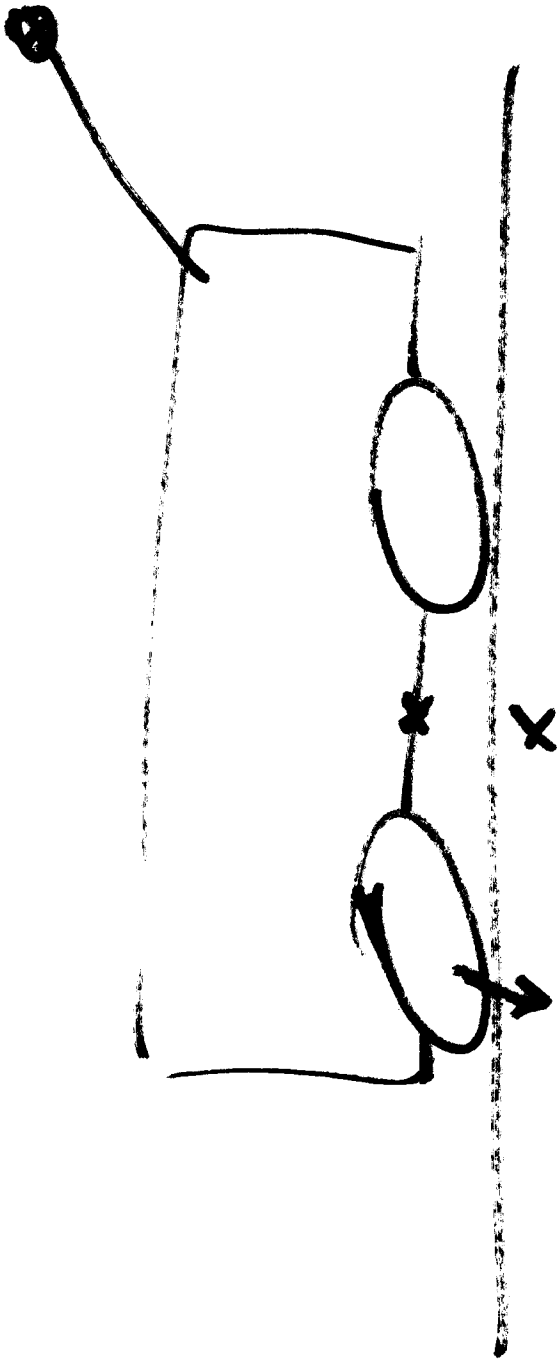
Electronegativity Difference

Cu - Zn

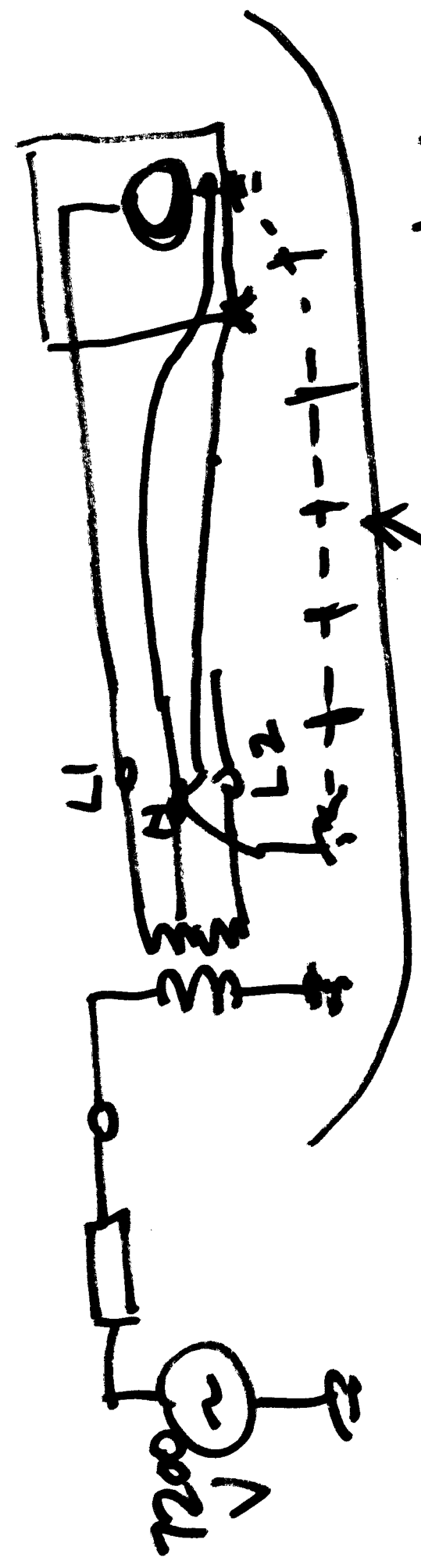


# High-Imp Faults

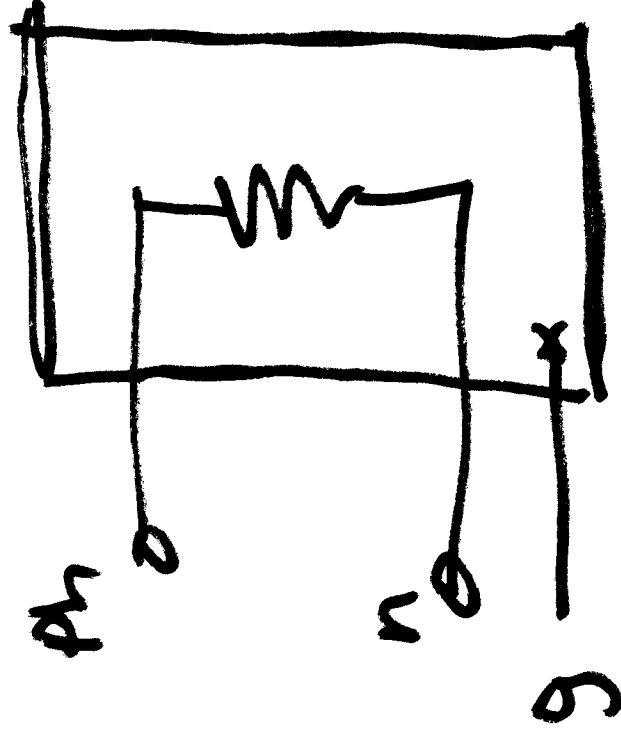




# Stray Voltage -



step potential



Cattle: 500mV  
Pigs: 200mV

