

E.4. EFFECT ON SPARSE CANDIDATE $k=5$ OF INCREASING THE NUMBER OF VARIABLES.

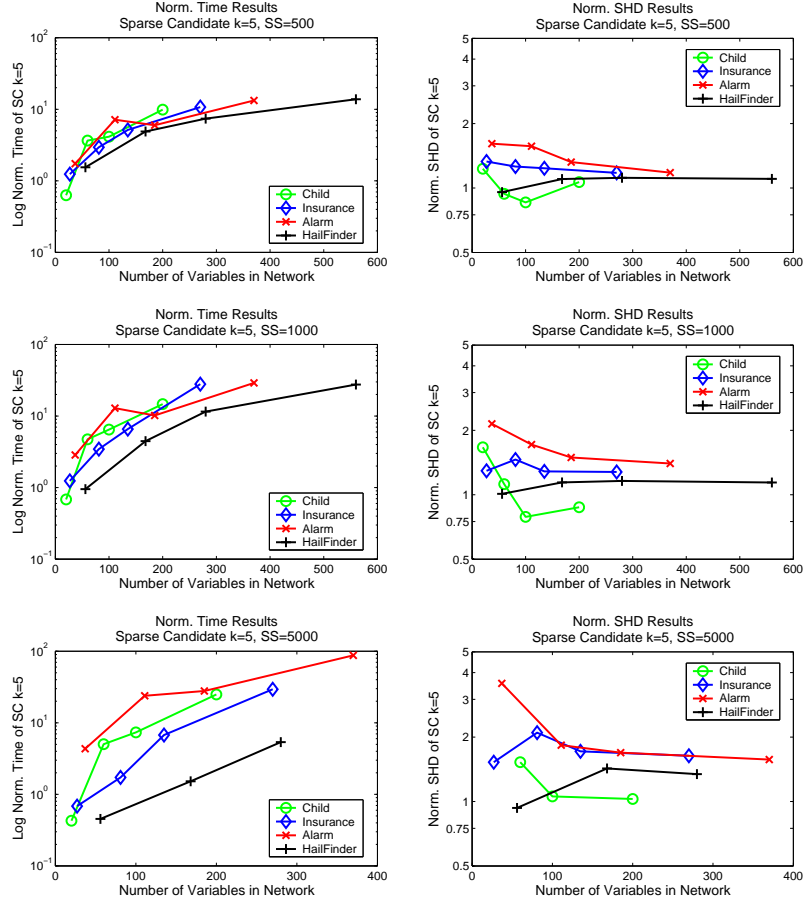


Figure 34. Normalized Time and Normalized SHD vs. number of variables in the network for the Sparse Candidate algorithm with $k = 5$ on the CHILD, INSURANCE, ALARM, HAILFINDER tiled networks.