

E.5. EFFECT ON SPARSE CANDIDATE $k=10$ OF INCREASING THE NUMBER OF VARIABLES.

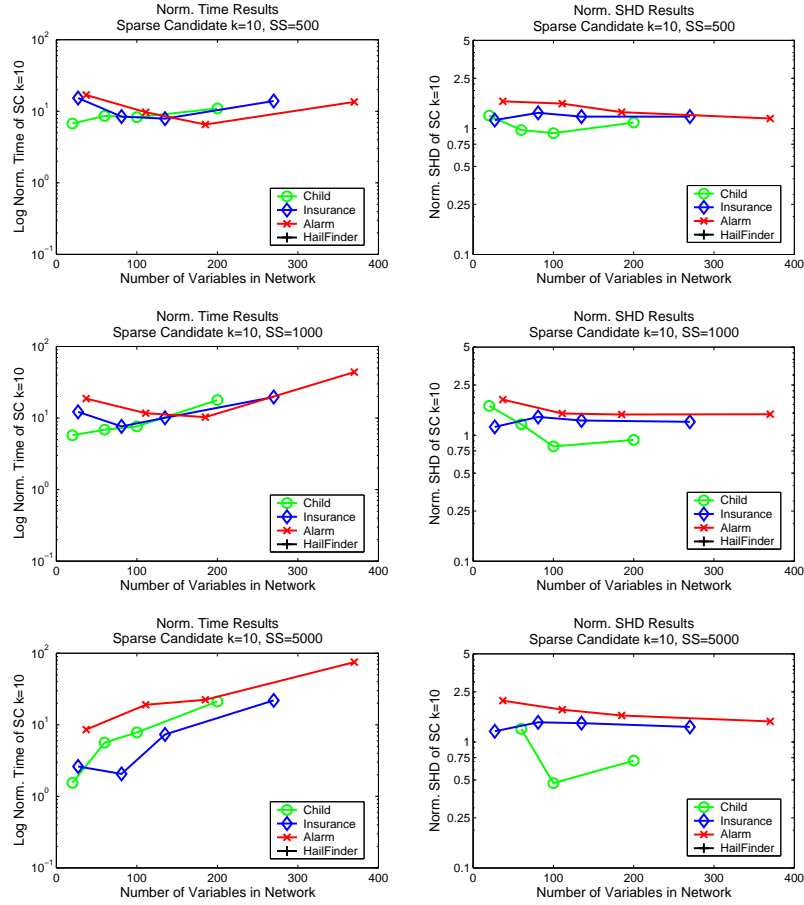


Figure 35. Normalized Time and Normalized *SHD* vs. number of variables in the network for the Sparse Candidate algorithm with $k = 10$ on the CHILD, INSURANCE, ALARM, HAILFINDER tiled networks.