

MathCad Basics

(Dr. Tom Co 9/18/2008)

1. Variables

- Use any letter combinations
- Should start with letter
- Greek symbols: type letter followed by [ctrl-g] (see Table 1 for correspondence)
 - o Alternatively: [view]→[toolbars]→[greek]
- Can use label-subscripts: type period then the labels

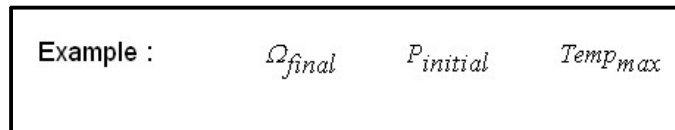


Figure 1. Example of variable labels

2. Editing mathematical terms and formulas

- Special editing keystrokes:
 - o **[Spacebar]** – enlarge selections
 - o **[Right-cursor]** and **[Left-cursor]** – moves selection
 - o **[Insert]** – toggles the insertion position before or after
 - o **[ctrl-z]** – undo key (very useful !)
 - o **[Backspace]** – removes selections to the left side of cursor
 - o **[Delete]** – removes selections to the right side of cursor
 - Note: there are 2 types of placeholders:
 - i. for numbers and variables (small filled box)
 - ii. for operation symbols (larger open box)
- Use parenthesis to group terms
 - o Typing left-parenthesis followed immediately by right parenthesis will produce a placeholder.
 - o Can also use the prime **[']** key to preset parentheses – but not for defining the arguments of functions.
 - o To remove parentheses, move to immediate left of the right-parenthesis, then hit **[Delete]** key (or move to immediate right of left-parentheses then hit **[Backspace]** key)
- For division, use the slash **[/]** key, but also use the **[Cursors]**, **[Space]** and **[Insert]** keys to position where the division occurs. **Tip:** use parenthesis often for dividing groups of terms, they can be removed later using **[Delete]** or **[Backspace]**.

- special math operators include
 - **Calculus:** turn on **[view]→[toolbar]→[calculus]**. For most hotkeys, hover over the symbols. Below are some of the more often used:
 - **[ctrl /]** for first order derivative
 - **[ctrl shift /]** for high order derivative
 - **[ctrl I]** for indefinite integral
 - **[&]** for definite integral with limits
 - **[ctrl \$]** for summation with limits
 - **[ctrl #]** for product with limits

(for subscripting indices use the left-square-bracket “[”
– do not use the period)
 - Other hot-keys
 - Use backslash [****] for square root
 - Use vertical bar [**|**] for absolute value

3. Assignments and Functions

- Use the colon “:” key to define values or define functions
- The default order of calculation order is from top to bottom, and from left to right
- Arguments are separated by commas and enclosed by parenthesis.
- There are several built-in functions. To search, use **[INSERT]→[Functions...]** menu or **[Ctrl e]** to bring out window. Alternatively, click on HELP button: **[F1]**.
- To evaluate numerically, use the equal **[=]** key.
- To evaluate symbolically, use the **[ctrl .]** key. (or **[ctrl shift .]** key for extra options). (more information below)
- When defining series, first set the index series and then input the values one by one by ending each entry by a comma before the next entry.

$i := 0, 1.. 5$ $a_j :=$

2	$a =$	2
3		3
2.2		2.2
1.2		1.2
2		2
2		2

4. Text

- End with **[spacebar]** will convert to math to text
- Use **[Format]→[Style]** to change default fonts. (“**Normal style**” is most often used).

- The Greek symbols can also be input by the **[ctrl-g]** method.
- You can also use **[INSERT]→[Math region]** to include math equations and symbols.

5. Symbolic Manipulation

- Use **[ctrl =]** to define equations
- There are two modes: live symbolic (using key entry) and interactive symbolic (using menu)
 - Using **[ctrl shift .]** will allow several keywords to specify evaluation:
 - The **"simplify"** keyword can automatically divide off common terms
 - The **"assume, ..."** can help in evaluations, e.g. during integration.
 - Select **[View]→[toolbar]→[Symbolic]** menu to access more items
 - When using multiple operations on live-symbolic, you can use the right-square-bracket **"]"** key to add lines
 - When using the interactive mode (hit **[Alt s]** to drop-down the menu):
 - You can choose also the **[Evaluation Style]** and toggle on or off the **[Evaluate in place]** button.

6. Units

- To access built-in units, either select **[Insert]→[units]** menu or use **[ctrl u]** hotkey
For a partial list of available units, refer to Table 2.
- During definition of constants, simply enter units after the constant (or explicitly type the multiplication **"*"** symbol followed by the units)
- When a different set of units need to be displayed, put the cursor at the end of the original units, then in the placeholder, type the new units
- To build user-defined units, define them as a new constant.
- When plotting variables with units, the coordinates should be normalized, i.e. divided by the units themselves. (more details in the plot section below).
- For degrees centigrade or degree Fahrenheit, one needs to use **[ctrl u]** and select these symbols.

7. Vectorized Operation

- Useful for element-by-element operation.
- First selecting the group of terms to be "vectorized", then key-in **[ctrl -]**. (An arrow should appear above the selected group)

8. Plots

- Select [Insert]→[Graph]→[x-y plot] menu item.
- There are 3 placeholders each for the x-axis and y-axis, respectively: the low value, the high value and the variable in that axis. If the high and low value placeholders are not filled, then these values will be automatically determined from the plot data
- Several variables can be plotted. Each should be separated by commas.
- By double clicking on the plot, several modifications can be obtained
- Plots can also be resized and moved

9. Importing Data

- There are several types of data that can be imported, including databases, Matlab and Excel files.
- It is advisable, for novices, to use data saved as text files.
- To import text files,
 - o Put the cursor in an empty spot in the worksheet.
 - o Select **[Insert]→[Component...]→[Data Import Wizard]**.

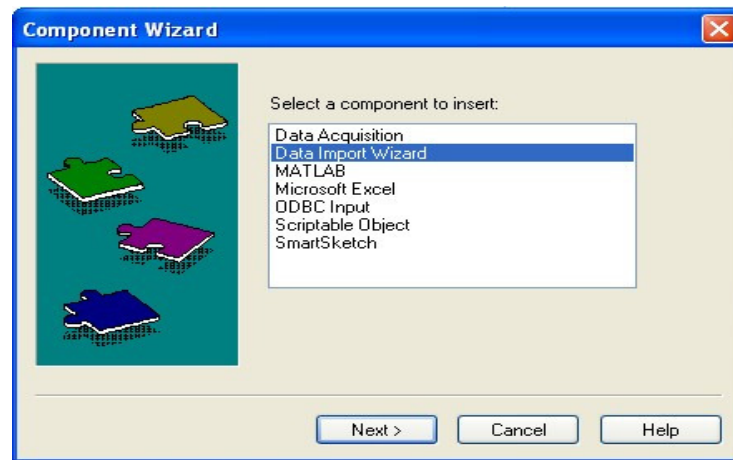


Figure 2. Data import wizard window.

- o Choose the files and appropriate types. Also, carefully select the row where the data begins (in case the first row contains the headings).
- o Type in the name of the variable at the placeholder. (See Figure 3)

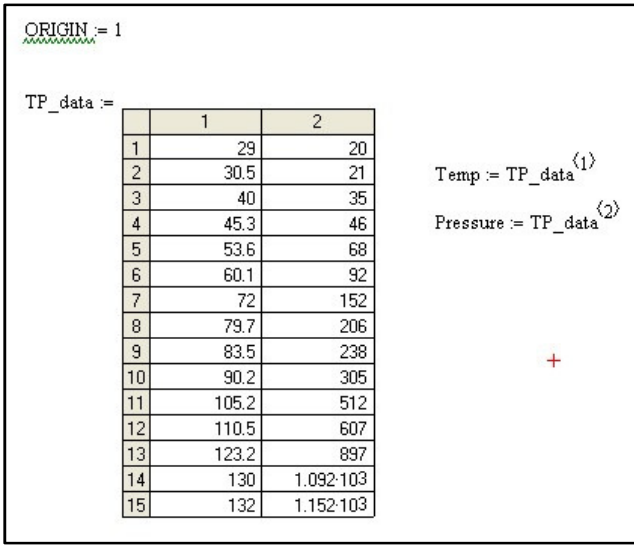


Figure 3. After importing data.

- To extract the columns, locate the cursor at the end of the data array variable then key-in [Ctrl 6] and supply the column needed. (See Figure 3).

10. Exporting Data

- There are several types of data that can be exported, but it is also advisable at this point to learn how to export data as text files.
- To export text files:
 - First collect the columns into an array by using the augment function. (See Figure 4)

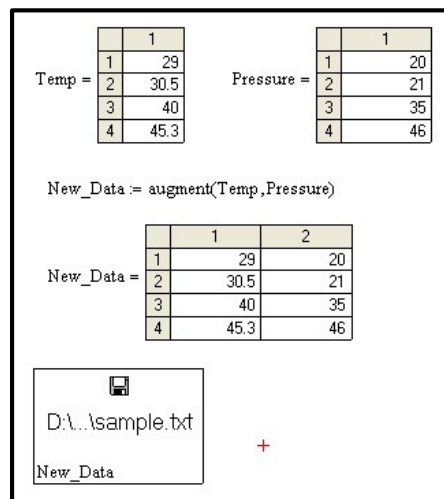


Figure 4. Augment column before exporting data.

- Select [Insert]→[Data]→[File Output...] menu
- Choose the file name and other settings
- A box will appear, with a placeholder below the file name.
- Type in the array variable name that contains the data (see Figure 4).

Table 1. SYMBOL/GREEK FONT EQUIVALENCE

a	α
b	β
c	χ
d	δ
e	ε
f	φ
g	γ
h	η
i	ι
j	ϕ
k	κ
l	λ
m	μ

n	ν
o	ο
p	π
q	θ
r	ρ
s	σ
t	τ
u	υ
v	ϖ
W	ω
X	ξ
Y	ψ
Z	ζ

A	Α
B	Β
C	Χ
D	Δ
E	Ε
F	Φ
G	Γ
H	Η
I	Ι
J	ϑ
K	Κ
L	Λ
M	Μ

N	Ν
O	Ο
P	Π
Q	Θ
R	Ρ
S	Σ
T	Τ
U	Υ
V	ς
W	Ω
X	Ξ
Y	Ψ
Z	Ζ

Table 2. Built-in Units in MathCad

	Mcad Units	Description		Mcad Units	Description	
Length	Angstrom	Angstrom	Force	N	Newton	
	cm	Centimeter		kN	Kilonewton	
	ft	Feet		kgf	kilogram-force	
	in	Inches		dyne	Dyne	
	km	Kilometer		lbf	pound-force	
	m	Meter		tonf	ton-force	
	µm	micrometer		Pressure	atm	Atmosphere
	mm	Millimeter	Bar		Bar	
	nm	Nanometer	Pa		Pascal	
	MI	Mile	MPa		Megapascal	
Yd	Yard	GPa	Gigapascal			
Mass	Gm	Gram	in_Hg		inches mercury	
	Kg	Kilogram	psi		pounds per inch ²	
	Mg	Milligram	psf	pounds per foot ²		
	Tone	metric ton	torr	Torr		
	ton	Ton	Energy	J, joule	Joule	
	Oz	Ounce		Cal	Calorie	
	Lb	Pound		kcal	Kilocalorie	
Time	s, sec	Second		BTU	British thermal unit	
	Min	Minutes		erg	Erg	
	Hr	Hour		Hp	Horsepower	
	Day	Day		W	Watts	
	Yr	Year	kW	Kilowatts		
	Ms	Millisecond	MW	Megawatts		
	µs	microsecond	Power	K	Kelvin	
Sub-stance	mol, mole	Mole		Temperature	R	Rankine
	Volume	I, L, liter			Liters	velocity
MI		Milliliter	Knot	Knot		
Gal		Gallon	Mph	miles per hour		
fl_oz		fluid ounce	C	speed of light		
Vol Flow Rate		Gpm	gallons per minute	viscosity	poise	
			stokes		Stokes	

Table 2. Built-in Units in MathCad (continued)

Angles	rad	radians
	deg	degrees
Electric Potential	V	volts
	kV	kilovolts
	mV	milivolts
Electric Charge	C, coul	coulumb
Electric Current	A	amperes
	kA, KA	kiloamperes
	mA	miliamperes
	μ A	microamperes
Electric Resistance	ohm, Ω	ohms
	k Ω , K Ω	Kilo-ohm
	M Ω	megaohm
Electric Capacitance	F	Farads
	μ F	microfarads
	nF	nanofarads
	pF	picofarads
Electric Inductance	H	Henrys
	mH	Milihenrys
	μ H	Microhenrys
Frequency	Hz	Hertz
	kHz, KHz	Kilohertz
	MHz	Megahertz
	GHz	Gigahertz